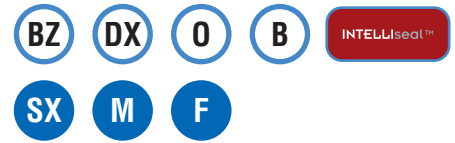


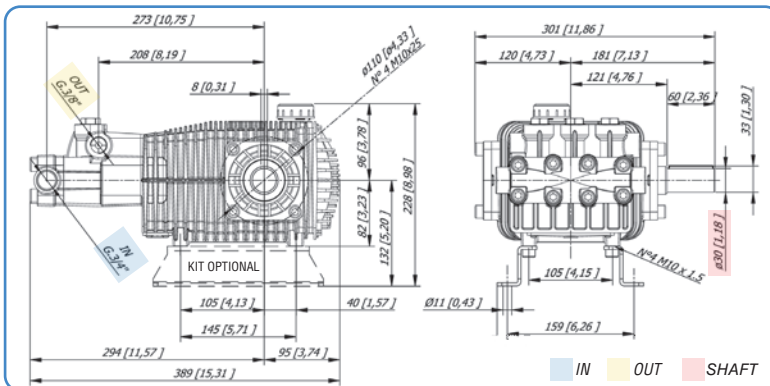
Caratteristiche - Specifications - Caractéristiques - Características

IN	Ø	3/4 BSP
	Press. Min.	-0,1 bar (-1.5 PSI)
	Press. Max.	6 bar (87 PSI)
	Temp. Max.	74°C (165°F)
OUT	Ø	3/8 BSP
SHAFT	Ø	30 MM
OIL	SAE 75W 90	1,5l (0.4 U.S.gal.)
WEIGHT	kg (lbs)	23 kg (50.7 lbs)



Codice Code	Modello Model	Press. Max Max Pressure		950 RPM				1200 RPM				1450 RPM				Pistone Plunger	Corsa Stroke
		bar	PSI	l/min	GPM	kW	hp	l/min	GPM	kW	hp	l/min	GPM	kW	hp		
18.2005.97.3	RXZ 1950	500	7250	12	3,2	12,0	16,1	15	4,0	15,0	20,1	19	4,8	18,0	24,1	20	14,4
18.2004.97.3	RXZ 2350	500	7250	15	3,9	14,6	19,6	19	4,9	18,2	24,5	22	5,9	21,8	29,3	20	17,5
18.2000.97.3	RXZ 3050	500	7250	20	5,2	19,4	26,0	25	6,5	24,2	32,5	30	7,8	29,0	38,9	20	23
18.2006.97.3	RXZ 3250	500	7250	21	5,6	20,8	27,9	27	7,0	26,1	34,9	32	8,4	31,2	41,8	20	25

RX 500



Guarnizioni - Seals
Joints - Juntas

Anteriori - Front Super "U"

Posteriori - Rear "U"

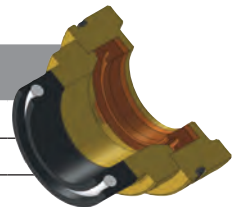
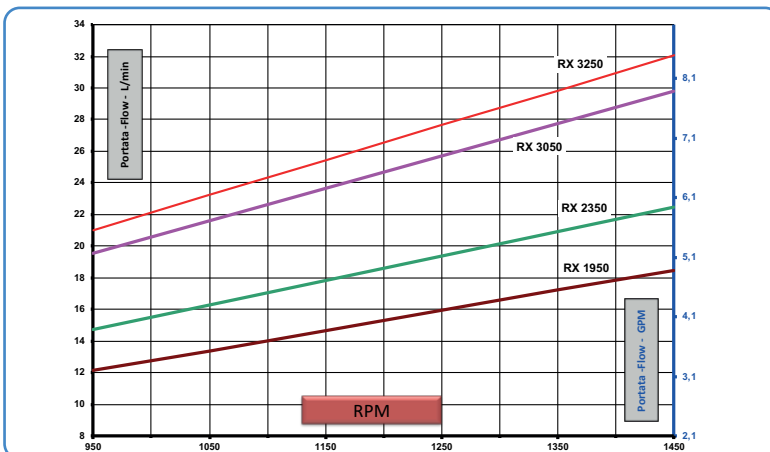


GRAFICO PRESTAZIONI - PERFORMANCE CHART



Accessori di completamento - Complementary accessories
Accessoires complémentaires - Accesorios complementarios

