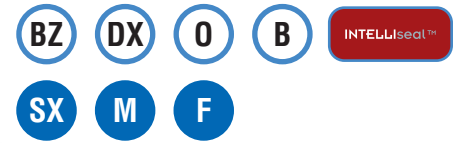


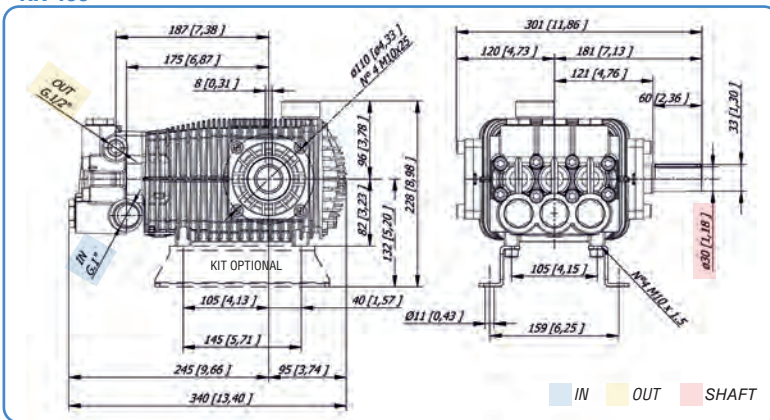
Caratteristiche - Specifications - Caractéristiques - Características

IN	Ø	1" BSP
	Press. Min.	-0,1 bar (-1.5 PSI)
	Press. Max.	6 bar (87 PSI)
	Temp. Max.	74°C (165°F)
OUT	Ø	1/2 BSP
SHAFT	Ø	30 mm
OIL	SAE 75W 90	1,5l (0.4 U.S.gal.)
WEIGHT	kg (lbs)	23 kg (50.7 lbs)



Codice Code	Modello Model	Press. Max Max Pressure		950 RPM				1200 RPM				1450 RPM				Pistone Plunger	Corsa Stroke
		bar	PSI	l/min	GPM	kW	hp	l/min	GPM	kW	hp	l/min	GPM	kW	hp		
18.2003.97.3	RX 2340	400	5800	15	4,0	11,6	15,6	19	5,0	14,5	19,5	22	5,8	17,4	23,3	22	14,4
18.2002.97.3	RX 2840	400	5800	18	4,8	14,1	18,9	23	6,1	17,7	23,7	27	7,1	21,1	28,3	22	17,5
18.2001.97.3	RX 3540	400	5800	24	6,3	18,4	24,6	29	7,7	23,0	30,8	35	9,2	27,5	36,8	22	23
18.2007.97.3	RX 3840	400	5800	25	6,6	19,7	26,5	32	8,5	24,7	33,1	38	10,0	29,5	39,6	22	25

RX 400



Guarnizioni - Seals Joints - Juntas

Anteriori - Front	Super "U"
Posteriori - Rear	"U"

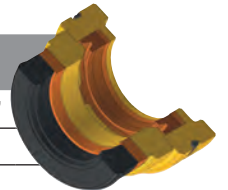
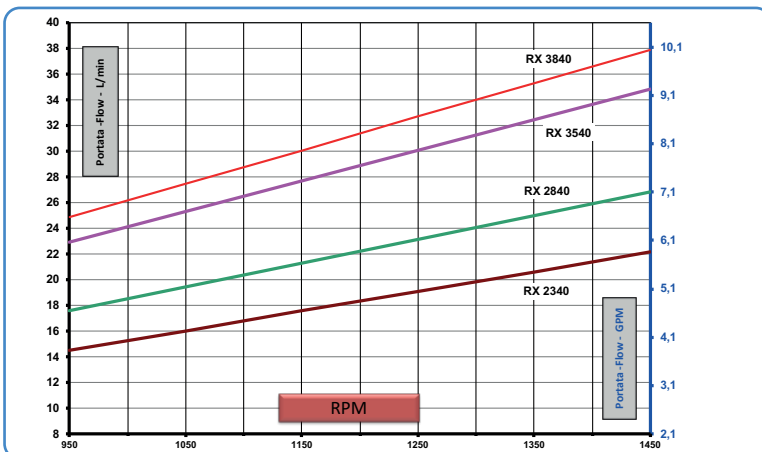


GRAFICO PRESTAZIONI - PERFORMANCE CHART



Accessori di completamento - Complementary accessories Accessoires complémentaires - Accesorios complementarios

