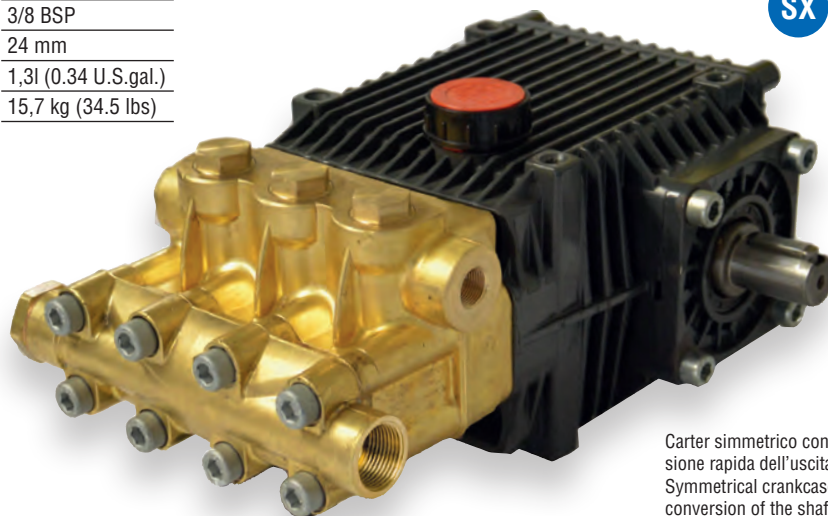
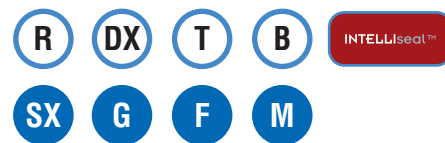


KTL500 TTL / TTK / KTL / KKL SERIES

Caratteristiche - Specifications - Caractéristiques - Características

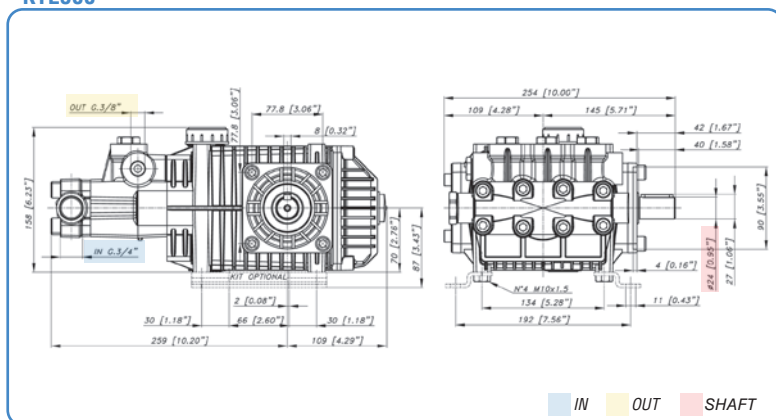
IN	Ø	3/4 BSP
	Press. Min.	-0,1 bar (-1.5 PSI)
	Press. Max.	6 bar (87 PSI)
	Temp. Max.	74°C (165°F)
OUT	Ø	3/8 BSP
SHAFT	Ø	24 mm
OIL	SAE 75W 90	1,3l (0.34 U.S.gal.)
WEIGHT	kg (lbs)	15,7 kg (34.5 lbs)



Carter simmetrico con doppio fissaggio per conversione rapida dell'uscita albero (destra o sinistra).
Symmetrical crankcase with double fixing for quick conversion of the shaft drive (right or left).

Codice Code	Modello Model	Press. Max Max Pressure		950 RPM				1450 RPM				Pistone Plunger	Corsa Stroke
		bar	PSI	l/min	GPM	kW	hp	l/min	GPM	kW	hp	Ø mm	mm
06.3026.97.3	KTL 1550	500	7250	10	2,6	9,6	13,0	15	4,0	14,8	20,0	18	14,4
06.3027.97.3	KTL 1750	500	7250	11	2,9	11,0	14,9	17	4,5	16,9	22,8	18	16,4
06.3028.97.3	KTL 2050	500	7250	13	3,4	12,8	17,3	20	5,3	19,5	26,4	18	19

KTL500



Guarnizioni - Seals Joints - Juntas

Anteriori - Front Super "U"
Posteriori - Rear "U"

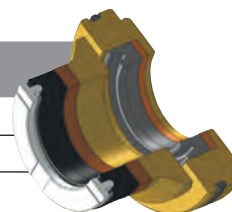


GRAFICO PRESTAZIONI - PERFORMANCE CHART



Accessori di completamento - Complementary accessories Accessoires complémentaires - Accesorios complementarios

